

# Quizzler 3

## Table of Contents

About Quizzler	2
Quiz Databases	2
Installation	3
Registration	3
Starting Quizzler - The Quiz List Screen	4
Import	5
Quiz Options	6
Answering Quiz Questions	7
My Scores & Other Scores	9
Preferences	10
Making Your Own Quizzes	10
Quizzler File Format	11
Working With Pictures	17
Version History	19
Credits and Contact Info	20

## About Quizzler

Quizzler is the standard for quiz taking on the Palm and PocketPC platforms. The Quizzler application reads quiz database files that contain trivia and questions on any subject imaginable. Quizzes can be educational (math, science, vocabulary) and/or entertaining (trivia, riddles). Since you can create your own quizzes with Quizzler (even Mac users!), there is no limit to what you can do with it.

Once you have a quiz database file, you can use Quizzler to make learning fun. You can choose from a variety of formats: multiple choice, true and false, flash card, or reverse questions. You can answer the questions in order or randomly. There is even a Speed Game option where you try to beat the clock. Quizzler keeps track of your score as you go, and remembers your last score for each quiz.

Best of all, Quizzler is free! You can find many free quiz files in the quiz library at [www.PocketMobility.com](http://www.PocketMobility.com).

For quiz jockeys who need more advanced features, we also offer a commercial version called Quizzler Pro. This includes features to make it easier to create very large quizzes, add pictures, add copy protection and certification features, create exams, and track the scores of others. Once a quiz has been created with advanced features using Quizzler Pro, all quiz features are available using the free version of Quizzler.

Quizzler Maker is a Windows based product that lets you create quizzes for the Palm using a simple, easy to use interface, without the need to know the Quizzler file format. You can download a free demo at [www.PocketMobility.com](http://www.PocketMobility.com).

We also have a product called Math Wiz that will quickly generate mathematics quizzes for you in a snap. You can choose from addition, subtraction, multiplication, division, number series, and algebra -- or create a mix.

## Quiz Databases

A quiz database file contains all the questions and answers, as well as author information and optional features that quiz authors can embed in the quiz. This allows quiz authors to freely distribute quizzes yet still receive due credit and advertising for their hard work. Quizzler writes the last quiz score in the quiz database file as well, so this information goes along with the database file.

New quiz databases can be easily created by using the Memo Pad application (see "Making Your Own Quizzes" section below), and Palm quiz database files always end with ".pdb". You can easily beam quiz database files to others. After you install a quiz database on your Palm device, the next time you do a HotSync with your desktop computer, the quiz database file ending in ".pdb" will be copied up to your desktop computer and you can find the file there. (The Backup conduit must be enabled during HotSync)

Quizzler Pro lets you create large quiz files by importing "Palm Doc" files, so you can use a word processor like Microsoft Word to create your quiz file. With a utility called "pDocs", you can export the file from Word to your Palm handheld. There is also a free program called "Make Doc" (MakeDocW.exe) that will convert NotePad files to a format the Quizzler Pro

can read.

Quizzler Pro also supports the addition of pictures to your quiz file. Our web site contains tech notes with all the details on how to use these third party programs and advanced features of Quizzler Pro.

# Installation on Palm Handheld

## System Requirements

To install and use Quizzler on your handheld device, you will need:

- Palm OS 3.0 or higher (Palm III or later handheld model) or a Pocket PC device
- Approximately 75 KB of RAM

## Automatic Installation

Quizzler now comes with an automatic installer. All you need to do is run the program on your Windows PC that can be downloaded or shipped on a CD-ROM, then just follow the screen prompts. If you can't run the installer on your Windows PC, or need to install with a Macintosh, then you can locate the required files and install them manually as explained below.

The automatic installer also contains Gradebook and Math Wiz, as well as demo versions of several quizzes for you to try out.

The README file that comes with the installer will have the latest instructions on how to proceed.

## Manual Installation

If you cannot run the automatic installer for some reason (Mac users, for example), you can also install the files manually. Be sure to select the download option that includes the individual files and not the automatic installer. Once you have downloaded Quizzler, installing the software onto your handheld is easy – just follow the three easy steps below. This requires the desktop software that came with your handheld device since a HotSync is necessary.

**Step One:** Unzip the file

**Step Two:** Select the files you want to install

**Step Three:** HotSync your PDA to install the files

**Step One: Unzip the file** When you download the Quizzler application, the result is probably a file ending with “.zip” such as “Quizzler.zip”. This is a compressed, or zipped, file format so you need to decompress the file. Some browsers may automatically decompress the files for you, so if you see a folder containing quizzler.prc then you can skip this step.

To decompress a zipped file, you need a program like WinZip or Alladin Expander (Windows), or Stuffit Expander (Macintosh). Select the “.zip” file with one of these programs and the file will be decompressed. For windows XP users, the zip file will appear as a folder; just drag the files out of the folder and put them somewhere else (like the desktop).

**Step Two: Select the files you want to install** The Palm Desktop software is used to select files to be installed the next time you Hotsync. Your Palm User Manual should provide more thorough instructions for how to do this.

On a PC running Windows, just double-click on the files you want to install. This should

include quizzler.prc and any quiz files (ending with “.pdb”). After double-clicking on the files, the “Install” window will appear. Click the “done” button to make the window go away.

**Step Three: HotSync your handheld to install the files** To install the files, HotSync your handheld as usual by placing your handheld in the cradle or connecting the HotSync cable and pressing the HotSync button. Once the HotSync is complete, you will see “Quizzler” in your applications window in the “unfiled” category. You won’t see the quiz database files there, but they will be listed when you start Quizzler.

## Installation on Pocket PC Handheld

### System Requirements

To install and use Quizzler on your handheld device, you will need:

- Windows CE 3.0 or later (Pocket PC)
- Approximately 50 KB of RAM

### Automatic Installation

Quizzler now comes with an automatic installer. All you need to do is run the program on your Windows PC that can be downloaded or shipped on a CD-ROM, then just follow the screen prompts. If you can’t run the installer on your Windows PC then you can locate the required files and install them manually as explained below.

The automatic installer also contains demo versions of several quizzes for you to try out.

The README file that comes with the installer will have the latest instructions on how to proceed.

### Manual Installation

You will find the file you need in the “pocketpc” folder. Locate the following file:

Quizzler.exe

You will need to connect your handheld to your computer to install the software. All you need to do is to drag this file from your desktop computer, to the window that represents your mobile device (open “My Computer”, then “Mobile Device”, then “My Pocket PC”).

To find and run the newly installed application on the Pocket PC, open the “File Explorer” application. Pull down the “Start” menu, and select “Programs” to find this program.

Now that you’ve found “File Explorer”, run that program. You will find your new software program in the list, and you can tap on it to run the program. (You should see “My Documents” at the top of the screen, and the folders “Business”, “Personal”, and “Templates” in the list, too)

### Pocket PC Quizzler Features

Quizzler for Pocket PC currently does not contain all the features of the Palm version. You cannot create new quizzes, but you can read the same quiz files that are used for the Palm version. Quizzler Pro (the commercial version) is not available for Pocket PC. Stay tuned for

updates to the Pocket PC version.

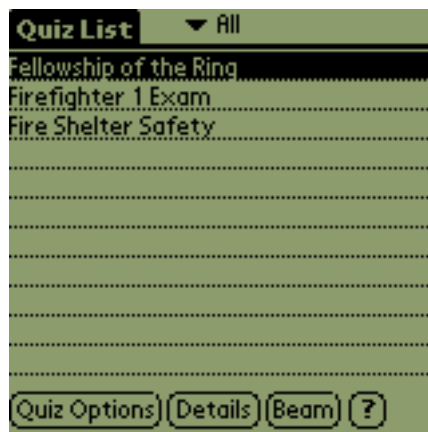
## Registration

You can upgrade from Quizzler to Quizzler Pro just by entering a Key Code. Select the “Upgrade Quizzler Pro” menu item to do this. You will be asked to enter a Key Code that is related to your Palm user name. If you provided your Palm user name during purchase of Quizzler Pro, then you will receive an email with your custom Key Code. You can also obtain your custom Key Code by visiting [www.PocketMobility.com](http://www.PocketMobility.com).

If you enter an incorrect Key Code, then you will receive an error message. You can also select the “About Quizzler” menu item to see what version you currently have. The name of the program will say “Quizzler” or “Quizzler Pro” in that screen.

Some commercial quizzes also require a key code. Go to the “Options” screen and select “Register This Quiz” to enter the code for a specific quiz.

## Starting Quizzler - The Quiz List Screen



When you launch Quizzler, you see the Quiz List screen. This screen shows you a list of all quiz database files on your handheld device. Both old style (Quizzler 1.x) and new style (Quizzler 2 or later) quiz files are shown. Select a quiz from the list by tapping on it, then choose one of the following actions:

You can use the “up” and “down” hardware buttons to scroll, or tap the up and down arrows on the Palm screen, if your list of quizzes is more than one screen.

**Quiz Options** - Go to Quiz Options screen to view more info about this quiz and begin taking a quiz.

**Details** - Bring up a windows that lets you change the category and delete the quiz database file

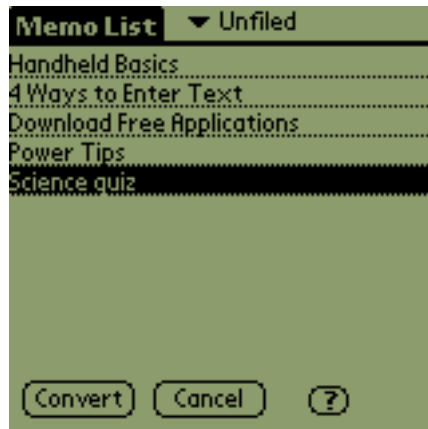
**Beam** - Beam a quiz database file to another device

There are also two relevant menu items:

**Import Memo** - Import a new custom quiz you created with the Memo Pad application.

**Import Doc File** - Import a new custom quiz you created as a Doc file. For example, you may have used Microsoft Word to create a quiz, and exported it to the Palm with the pDocs utility. Quizzler Pro is required to import Doc files.

## Import



The Import screen shows you a list of all the memos in the Memo Pad application, as long as there is more than one line in the memo. If you have created your own quiz here, you can select that memo and tap “Convert” to convert the memo into a quiz database file.

In Quizzler Pro, you can import your quiz from a Doc file. “Doc” is a format that is commonly used for text files on the Palm, and there are many third party tools available that allow you to convert desktop files into Doc files for your Palm. Since Doc files can be larger than Memo Pad memos, you may find this more convenient.

If you try to convert a memo that is not in the special quiz format, you will get unpredictable results.

You can use the “up” and “down” hardware buttons to scroll, or tap the up and down arrows on the Palm screen, if your list of memos is more than one screen.

When you create a new quiz with Quizzler 2 or later, you will be creating a new style quiz that cannot be seen with older 1.x versions of Quizzler.

### Creating Large Quizzes

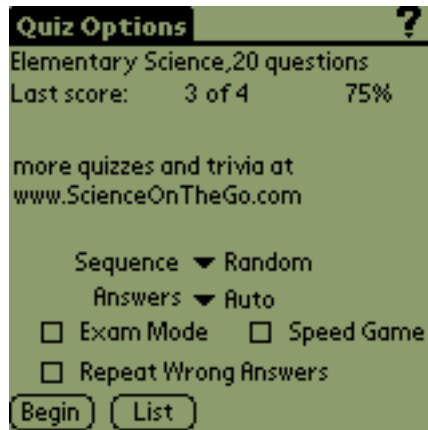
The current version of the Memo Pad application only lets you create memos up to 4000 characters long. If you want to create a quiz that is larger than this, you need to break up the quiz into separate memos under 4000 characters each, **with each memo having the same title**. When you try to import and convert a memo with the same title as an existing quiz database, you will be warned and given the option to append the memo questions to the bottom of the existing quiz database (the comment line of the subsequent memo will be ignored). In this fashion you can create very large quiz database files that exceed the 4000 character limit.

The other alternative is to create one single large text file using your favorite word processor on your desktop computer, then convert this to a “Doc” file using a third party program like “pDocs” or “TealDoc”. You can install the Doc file on your Palm and import all the questions at once. Quizzler Pro allows you to import from Doc files.

The windows based Quizzler Maker product provides yet another way to create large

quizzes more conveniently.

## Quiz Options



The Quiz Options screen will show you how many questions in the selected quiz, the last score, and a comment field that was written by the quiz author. Some quizzes may contain extra information that you can see by tapping the “More Info” button.

Tap “Begin” to start answering questions, or “Quiz List” to return to the Quiz List screen. At the bottom half of the screen there are options you can choose before taking the quiz.

**Chapters** - Some larger quizzes may make use of “chapters”. For a quiz with chapters, the list of chapters can be seen by tapping a button to the right of the “Chapters” label. You can choose to take questions for one chapter only, or all the questions in the quiz at once.

**Sequence** - You can answer the questions in random order, or sequential order, by making your selection here.

**Answers** - You can choose your quiz format by making your selection here:

**Multiple Choice** - All answers will be displayed. The order of the answers is random. See Multiple Choice Questions below for more information.

**True and False** - Only one answer is displayed. There is always a 50% chance that the correct answer will be displayed, no matter how many other answers are provided in the quiz database. See True and False Questions below for more information.

**Flash Card** - No answers will be displayed at first. You make a guess, then reveal the answer to see if you are correct. See Flash Card Questions below for more information.

**Reverse Questions** - Like Flash Card, but you are shown the answer and must guess the question.

**Auto** - This option will display the question in Multiple Choice mode if there is more than one answer, or Flash Card mode if there is only one possible answer. This allows you to have a “mixed mode” quiz with both types of questions.

**Repeat Wrong Answers** - After answering all questions, any questions answered incorrectly will be re-asked.

**Exam Mode** - There are two ways to get into Exam Mode. A quiz can be specially designed so that it only functions in this mode (using the “#exam” tag), or you can choose this as an option by checking the check box. There is just one difference: if a quiz has been specially designed to only function in exam mode, then you may not press any hardware button to leave Quizzler while taking the exam. The only way to leave the exam is by pressing the Stop button or answering all the questions.

When in exam mode, the answer mode is automatically set to “Auto” mode, and you will not get any feedback when you answer a question right or wrong. You may also change your answers as many times as you like. When you are finished with the exam, you will see your score then.

**Speed Game** - Check this option to play against the clock. In the Speed Game, each question is worth 10 points. A point is subtracted for each second it takes before you get the correct answer. For example, if it takes you 4 seconds to guess the correct answer, you will receive 6 points for that question. you always get at least 1 point for a correct answer.

The Speed Game works best in Multiple Choice or True and False formats.

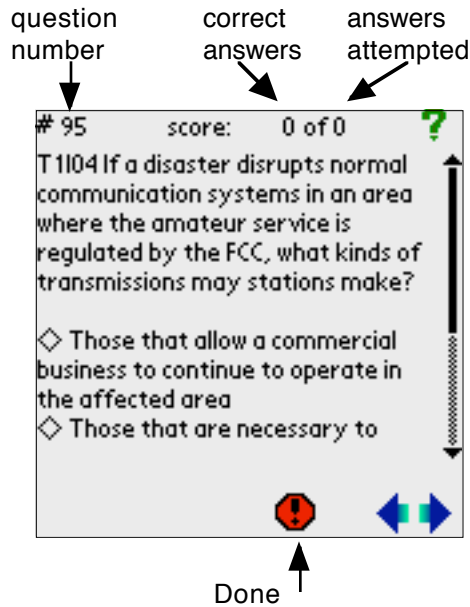
**Register** - Commercial quizzes will show a “Register” button on the Quiz Options screen until you enter your registration code. Note that this button only registers a quiz, and does not upgrade the application itself to Quizzler Pro.

**Score Code** - This menu item will display a special code that corresponds to your score. Not all quizzes make use of this feature, but it provides a means to verify the score that you received for certification purposes. The quiz author can verify that your score code corresponds to the score you reported.

**Last Score** - Some quizzes include a feature that hides your last score, so it may not be visible to you. Once you begin a new quiz, your last score is reset to 0 of 0.

## Answering Quiz Questions

The questions screens will look slightly different, depending on which quiz format you have selected. In all cases the top half of the screen is the same:



The “question number” is shown in the top left. This can be useful if you want to return to a specific question later using the “Goto Question” menu item. The current score is shown at the top right as “1 of 2”, which indicates 1 correct answer so far, and 2 questions attempted so far.

In Exam mode, the score is hidden, and you may change your answers as often as you like without affecting your score.

If you skip a question and don’t make any attempt to answer, it does not affect your score.

If an answer will not fit on one line, a scroll bar appears on the right, allowing you to see the rest of the question. You can also scroll by pressing the “up” and “down” buttons on your handheld device. If you are already at the bottom of the scrolling question when you press the “down” button, it will have the same effect as the “Right Arrow” button; i.e. you will go to the next question.

The question is displayed under the question number and score, followed by the answers (the answers area will be different for each quiz format). At the bottom of the screen there are always three buttons:

**Right Arrow** - Skip to the next question. Your score is not affected if you didn’t make any guesses. You may also press the “down” hardware button to go to the next question. Some quizzes will hide this button.

**Left Arrow** - Go to the previous question. Your score is not affected if you didn’t make any guesses. You may also press the “up” hardware button to go to the previous question. Some quizzes will hide this button.

**Done** - Finish taking the quiz and return to Quiz Options. This is only necessary if you are quitting the quiz prematurely.

And there is one menu item for navigation:

**Goto Question menu item** - Goto any question number you enter. For example, type “3” to jump directly to question #3 (not necessarily the third question if you are taking the quiz in random order).

### Multiple Choice Questions

In a Multiple Choice format quiz, all answers (as many as 10) will be displayed. You tap on the correct answer to move to the next question. If you tap the wrong answer, your score will update in the top right corner, but you will stay on that question. Keep guessing and tap the correct answer to move on. You are only scored on your first attempt.

Some quizzes allow more than one correct answer, or a variable amount of points for each answer.

### True and False Questions

In a true and false format quiz, one answer is displayed, and you must guess whether it is correct or incorrect. Even if there are 3 or 4 possible answers in the quiz database file, there will always be a 50% chance of the correct answer being displayed.

After you make your guess, the next question is displayed and the score updated.

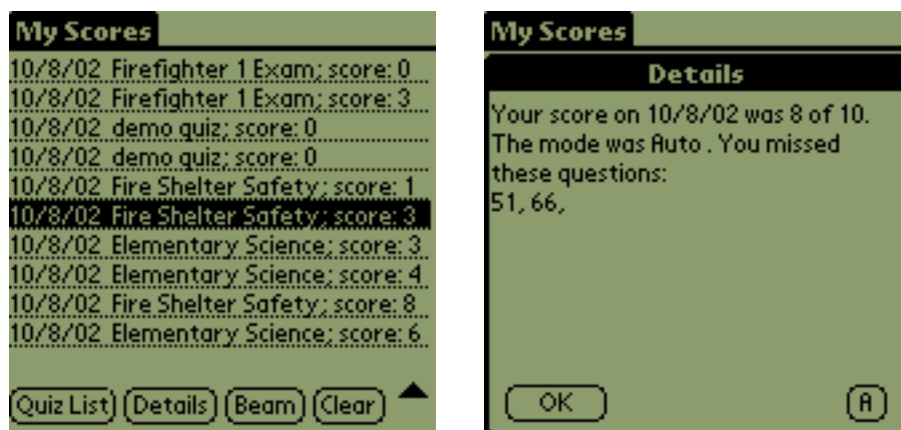
### Flash Card Questions

In a Flash Card format quiz, no answer is displayed at first. You must guess the correct answer, then tap “Show Answer” to see if you were correct. After seeing the correct answer, score yourself by tapping either “I was correct” or “I was incorrect”.

### Reverse Questions

This is just like Flash Card, but you are shown the answer and must guess the question.

## My Scores & Other Scores



As you complete quizzes, Quizzler keeps track of your most recent scores. You can see these scores by selecting the “My Scores” menu item. Actually, a lot more information than just the score is stored here. If you have Quizzler Pro, you can tap the “Details” button to

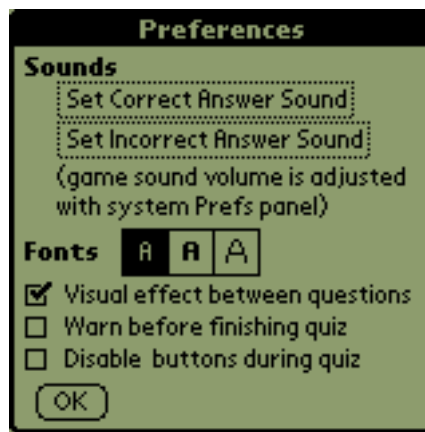
see more details about the quiz score. The Details window will show you what options were in effect for that quiz (multiple choice, flash card, exam, etc.), and exactly which questions you got wrong.

You may also select any score and beam this information to another Quizzler Pro user. That score will appear in the other user's "Other Scores" screen. This is a very handy feature if you are giving a quiz to several students, for example, and want to collect all those scores for your grade book.

Quizzler 3.4 and later features an "Export" button on this screen. This is used to export the scores to a file that Gradebook can analyze and do reports on. Just tap on a quiz score, then tap "Export". All the other scores associated with the selected quiz score will be exported to a file. Then run Gradebook to look at these scores.

## Preferences

Select the "Preferences" menu item to choose optional sound effects and font sizes.



Here you can select a sound to play after any correct answer and/or incorrect answers.

You can also select the font to display the questions and answers with, and whether you want a visual effect to display in between questions.

"Warn before finishing quiz" - You will get a warning before you finish a quiz. This is useful to prevent accidentally leaving the quiz and locking in your score (perhaps you skipped some questions you want to come back to).

"Disable buttons during quiz" - This will lock out all the hardware buttons except the up and down scroll buttons, making it impossible to leave a quiz while it is in progress (unless you tap the "Stop" button). This could be useful in a group where you are passing the handheld around, or with children.

## Making Your Own Quizzes

You can make your own quizzes very easily by creating a specially formatted text file (the format is described below). You can create this text file in the standard Memo Pad application that comes with every PalmOS device. This means that you can either use your

desktop computer (Windows or Macintosh) to enter the quiz data by pasting your text file into a memo, or if you have a Palm keyboard you can make your quizzes right on your Palm device.

Once you have created a memo in the correct format, you use the "Import" menu item on the Quiz List screen to select the memo and convert it to a quiz database file.

With Quizzler Pro, you can import your quiz data from a Doc file in addition to the Memo Pad. This works better for large quizzes that don't fit into a single memo. Our web site contains more details about dealing with Doc files and importing into Quizzler Pro.

We recommend always providing 3 or 4 possible answers so that all quiz formats make sense (multiple choice, true and false, flash card, reverse question).

You may have up to 1000 questions. When importing, Quizzler will only display the first 1000 memos or Doc files.

**Memo Pad Limitation** - The current version of Memo Pad only allows memos to have up to 4000 characters. To get around this limitation and create larger quizzes, just break up your quiz questions into several memos, with each memo having the same title. You can then append, or join together, your quiz memos into one quiz database file (see the section titled "Import").

Once a quiz memo has been imported and converted to a quiz database file, it will show up in the Quiz List screen. From here, you can beam it to others. The next time you do a Hotsync with your desktop computer (as long as the Backup conduit is enabled), the quiz database file ending in ".pdb" will be copied up to your desktop computer and you can find the file there.

**Quiz Authors** - Please send us a copy of your quiz database file (ending in ".pdb") so we can post them on our web site for all to share. This will help us to build a library of quizzes that will benefit everyone (original authors will get credit because of the "comment" field inside every quiz).

If you have created a commercial quality quiz and would like to sell your work, contact us about comarketing opportunities. We might be able to sell your quiz for you for a small commission.

Quiz contents are stored in an encrypted manner, so it would not be easy for anyone to copy your proprietary quiz electronically.

Email your new quiz database file to [info@PocketMobility.com](mailto:info@PocketMobility.com) or visit our web site at <http://www.PocketMobility.com>.

## Quizzler File Format

This is a public file format. We encourage others to copy and use the same format for your own products. Hopefully several products will emerge, all using the same file format. We have some quiz show products of your own that will use the same file format.

**For the latest documentation and examples**, see our web site at [www.PocketMobility.com](http://www.PocketMobility.com).

All Quizzler quiz files begin as plain text files using this format. Quizzler allows you to import these text files from either the Memo Pad or as Doc files, and creates database files in a proprietary format.

The first two lines of every quiz must begin with the `#quizzler` tag and the `#name` tag. You follow these two lines with some number of question/answer lines and other optional special tags that are described below. **(The first answer provided is the correct answer)** Using these tags you can create quizzes that operate in a wide variety of ways for many different purposes.

Beginning with Quizzler 2.1, you can insert blank lines in your quiz and they will be ignored.

Here is a very simple quiz text file that does not use any optional tags:

```
#quizzler demo
#name demo
```

```
This is a demo. How do you like it?
very much;it's OK;not at all
```

```
What is your favorite color?
blue;red;green;orange
```

## Required Tags

### **#quizzler**

Every quiz must begin with this tag on the first line. This is a marker that identifies this quiz as a Quizzler quiz. You can actually put anything you want after the tag, and doing so makes it easier to identify in a list of memos.

### **#name x**

Every quiz must have this tag on the second line. "x" is the name of the quiz as seen by the PalmOS system after importing the text file, and is limited to 32 characters. For PocketPC systems, this tag is ignored (but must still be present).

## Optional Tags

### **#author x**

"x" is a string that will be displayed on screen with the other options when a quiz is selected. Usually this will contain the author's name and/or contact information. The string is limited to 63 characters.

### **#moreinfo**

Use this tag to include more info about your quiz. In Quizzler 2.0, this extra info is available by tapping the "More" button on the Quiz Options screen. You might use this to include an explanation of your quiz, or a scoring table (like "5-10 correct = pretty smart"). The information you provide is limited to 255 characters.

### **#chapter x**

Use this tag in the middle of your questions to insert chapter markers. If you are going to insert chapter markers, you should insert one right before the first question. A quiz with

chapter markers will allow the user to take portions of your quiz (one chapter at a time), or the entire quiz. "x" is the name of the chapter and is limited to 23 characters.

### **#delimiter x**

The normal delimiter that separates answers is a semicolon. If you want to include semicolons within an answer, you need to choose a different character for your delimiter. "x" must be a single character.

### **#oneguess**

Only one guess is allowed for each question, so if the guess is wrong, it won't be revealed which answer is correct. This only applies to multiple choice style quizzes.

### **#scoreatend**

Use this tag to keep a user's score hidden until the quiz is over. Only one guess is allowed for each question (just like the #oneguess tag), and there will be no indication if each guess is right or wrong. This only applies to multiple choice style quizzes.

### **#nonavigate**

Use this tag to disable all navigational functions while taking the quiz. This forces the user to answer each question in turn. This could also be useful as a "demo mode" setup in which a Palm is passed around a group and you want to keep things simple. This tag will disable the Next and Previous buttons, and the Goto menu item.

### **#timer x**

This tag imposes a time limit for students taking the quiz. When the time limit expires, the quiz will end automatically. "x" is the number of seconds allowed for the quiz.

### **#useallanswers**

This is a shortcut for creating a multiple choice quiz without coming up with all the possible (wrong) answers. You simply include one possible (correct) answer for each question, and while taking the quiz in multiple choice mode, the user will see 5 possible answers which have been randomly selected from all the other questions. For example, you could create a vocabulary quiz and provide only the correct answer for each question, but still take the quiz in multiple choice mode.

### **#norandom**

Used to stop Quizzler from displaying answers in random order. Only makes sense when used with the new "Long" Quizzler file format (see our web site for details).

### **#**

Any tag that begins with "#" but doesn't match a valid tag will be ignored. You can use the symbol "#" followed by a space to insert comments into your quiz text file.

### **##points**

This tag is actually inserted after a possible answer, just before the semicolon or end of line. "x" is the number of points that should be awarded for that answer. When using "special points" in this manner, only one guess per question is permitted (just like the #oneguess tag).

For example, your question/answer might look like this:

How many times per day do you comb your hair?

zero##0;one to three##5;more than three##10

If the second answer is selected, then 5 points are awarded. You can use this tag to set up a multiple choice quiz with more than one "correct" answer.

### **Tags Supported by Quizzler Pro Only**

(Quizzler Pro lets you create new quizzes with the following features. Once created, either Quizzler or Quizzler Pro can be used to view the quizzes and use the special features.)

#### **##PICTURE:NUMBER**

This tag is placed at the end of a question, and links that question to a picture that is stored in a separate database file. You give the name of the database file, and the record number. For example, if there was a picture file named "fruits", and an apple was the 3rd image in that file, you would phrase the question like this:

What type of fruit is this?##fruits:2  
an apple;a peach;a plum

(a "2" is used to indicate the 3rd picture, since counting begins with "0")

This is a new tag introduced with version 2.5. Currently, only Quizzler Pro can CREATE a quiz with pictures. Quizzler Maker will be updated in the near future. The free Quizzler can VIEW quizzes with pictures.

#### **#protect nnnn**

nnnn is a number from 1000 to 32000. This is a code that must be entered before the quiz can be taken. If you also include the #limituse tag in a quiz, it must come AFTER the protect tag. In that case, you can take the quiz without entering a key code until the specified number of uses is used up, after that the key code must be entered. After entering the key code, the quiz is permanently unlocked for unlimited use (even if beamed to someone else).

#### **#exam**

Forces this quiz into exam mode all the time. This means that the answer mode will be set to "Auto", and there is no way to see the correct answers while taking the quiz. The score will be kept hidden, and answers may be changed while taking the quiz without affecting the score. Furthermore, the hardware buttons will be disabled so you can't leave the exam until you are finished. Introduced with version 3.0

### **Tags Supported by Quizzler Pro & Quizzler Maker Only**

(Quizzler Pro and Quizzler Maker allows you to create new quizzes with the following features. Once created, either Quizzler or Quizzler Pro can be used to view the quizzes and use the special features.)

#### **#scorecode x y**

This tag provides a means of certifying the score. You can request that a user provide you with the "Score Code" to verify what score they achieved when taking the quiz. The Score Code can be obtained by selecting the appropriate menu item in the Quiz Options section of Quizzler.

When using this tag, set "x" to a multiplier value that will be multiplied by the actual score, and set "y" to an offset that will be added to the result. For example, if the actual score was 10 and you use this tag: "#scorecode 5 -20", then the Score Code generated for this score

would be 10 X 5 -20, or 30.

### **#limituse x**

This allows you to create a quiz that can only be taken a limited number of times before it is disabled. This can be used as a form of copy protection so you can distribute a demo version, or as a way to prevent a student from taking a quiz repeatedly to get a better score. If you use this in conjunction with the “#nobackup” tag and beam your “fresh” quiz to a student, there will be no easy way to reload a new quiz to get more uses.

### **#nobeam**

Quiz authors creating a commercial quiz might want to disable beaming as a form of copy protection. This tag will prevent the quiz from being beamed to another device.

### **#nobackup**

This type of quiz will not be backed up on the desktop during a HotSync operation. This is another form of copy protection that you might desire.

### **#noscore**

Use this tag to completely hide the score so that there is no indication at all of incorrect or correct answers. You could use this tag along with the “#scorecode” tag for a certification type quiz, or as a means to provide a demo version of a commercial quiz.

## **Questions and Answers**

You can include up to 1000 questions in a quizzler file. Just insert each question on one line, followed by up to 10 answers on the next line. The total length of the questions and answers is limited to 8191 characters [Note: versions prior to 2.3 could only have 4 possible answers; versions prior to 2.7 had shorter limits on the question and answer sizes]

There is a new file format available that lets you put each answer on its own line. This can be more readable for large quizzes. See our web site for details on the “long file format”.

The first answer listed on each line is the correct answer. The order will be scrambled when viewed with Quizzler.

We recommend 3 or 4 possible answers in every quiz so that multiple choice becomes an option. Also, try to keep most answers less than 32 characters so they can be viewed more easily on the handheld screen.

Here is an example of a question and 3 possible answers:

```
What planet is closest to the Sun?  
mercury;venus;mars
```

## **Example**

Here is a quiz file that includes two chapters, and some questions have more than one correct answer (worth 1 point):

```
#quizzler my demo  
#name my demo  
#author By John Covele
```

#chapter The Planets

What planet is closest to the Sun?

mercury;venus;mars

Which planet gets much hotter than the earth?

mercury##1;venus##1;pluto

#chapter Science

What is boiling point of water?

212 degress##1;depends on altitude##1;200 degrees;150 degrees

Which weighs more: a ton of lead or a ton of feathers?

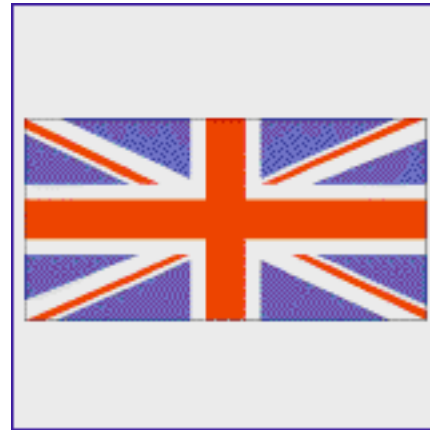
they are the same;feathers;lead

## Working With Pictures

Quizzler version 2.5 and later adds support for quizzes which contain pictures. If the "picture" button appears when viewing a question, there is a picture that will be displayed when you click the button. You tap anywhere on the picture to hide the picture and return to the question.



show picture



tap anywhere to hide picture

Only devices with PalmOS 3.5 or later can display pictures. A quiz that contains pictures will consist of two or more files: the quiz database file, plus one or more picture database files. The quiz database file is linked to the picture database file(s), but you can still use a quiz database file without the pictures.

You must own a copy of Quizzler Pro to create a quiz that contains pictures. Once created, any version of Quizzler (free or Pro) can be used to take the quiz.

### How to add pictures to your Quizzler quiz

When writing/creating the actual quiz, a special tag is required at the end of the question for which you'd like to add a picture.

For example, here is a sample quiz question with a picture tag added:

```
According to the map, which direction is Metro?##QuizPictures:3000  
north;south;east;west
```

You'll notice on our example that directly after the question, a tag called "##QuizPictures:4" was added. By adding this tag, you are telling your quiz to look for the picture database named "QuizPictures" and display picture number 3000.

Now we need to create the other picture database file...

### Creating the Picture Resource Database

There are two general techniques you can use to create the picture database file:

**option 1 - Create a resource database.** This method is more simple and supports more types of pictures. You need Quizzler version 3.23 or later. Instructions are below.

**option 2 - Create a non-resource database .** This is the original method required when pictures were first introduced with Quizzler version 2.5. This is slightly more complicated, requires third party software, and pictures are more limited. Instructions are given on this other page for this technique .

There are a variety of third party tools that will convert pictures from common desktop formats (like GIF, BMP, or JPEG) into a Palm bitmap format that can be read by Quizzler. You can install these tools on your desktop computer, or even do the conversion online which works with any platform. We will mention some of these third party tools here and tell you how to use them.

When you create a resource database, you will add pictures to the file and give each picture a number, or "ID". This is the number you use to refer to a particular image, like the "3000" in the example above. You must begin numbering your pictures with resource ID's of 1000 and higher.

Quizzler will display your picture in a window that is 160 x 160 pixels, so your images should be sized appropriately. Some third party tools will do the scaling for you if your image is too large. Your images can be in full color or black and white, but keep in mind that not all devices can display color and color images take up more space.

### **Third Party Image Creation Tools**

There is a third party utility called "OpenLogoHack" that allows you to display images on your Palm device at certain times. Conveniently, the same tools provided to create Open Logo Hack image databases will work with Quizzler, too. Note: you don't need to install OpenlogoHack, you will just use one of the tools for it.

**Online image converter** - This tool lets you upload images to a web site, and the image database is created and downloaded to your desktop. Pretty simple! Here are instructions for using this online tool:

- 1) Go to this web page: [olh.sourceforge.net/convert/index.html](http://olh.sourceforge.net/convert/index.html)
- 2) Enter the number of images you want in your image database, then press the "Start" button.
- 3) For "Output", choose "Open Logo Hack Database"
- 4) Select the appropriate "Screensize", and enter anything you want for "DB Comment".
- 5) For each image, or "Slot", you need to select a file and enter some information. The "Display Name" field is not used by Quizzler, so just make something up.
- 6) Press the "Convert Images" button, and a file called "logo.pdb" containing your images will be downloaded to your computer. All the pictures you convert using this tool will begin numbering at 3000. For example, the third picture will be number 3002.
- 7) Follow instructions below to set the picture database name to something more appropriate.

### **Setting The Picture Database Name**

You will need to set the picture database name to something unique for your own use.

**Keep in mind that the filename that you see on your desktop is not necessarily the same as the image database name as it appears on your Palm device.** The Palm name is stored internally. For example, when you use the OpenLogoHack tool described above, the filename is called "logo.pdb" but when you install this on a Palm device, the name is "OIHaLogos".

There is another third party tool called "**Filez**" that will allow you to examine the details of any file, and change its name. You can download this tool from PalmGear.com or Handango.com and run it on your Palm device. (There are many other similar tools available which run on either your desktop or handheld.) Make sure the real Palm name matched the name that you have in your quiz file, or Quizzler won't be able to display the picture.

## Version History

New in version 3.0:

- #exam tag
- Exam mode user option
- #newline tag
- Put quizzes into categories
- Save recent scores
- Beam scores to others
- New demo mode supported for commercial quizzes

New in version 2.7:

- Max length of question/answers raised to 8K!
- Fixed bug related to protected quizzes
- Fixed bug related to scoring when using chapters

New in version 2.6:

- #timer no longer requires Pro version
- #useallanswers tag added
- #protect tag added
- New Preferences: lock buttons, and warn before finishing quiz

New in version 2.5:

- Resume last quiz where you left off
- Add pictures to quizzes
- Questions may only be answered once for credit
- Score indicates whether you left multiple choice mode (with asterisk)
- Menu changes, modal About screen
- Upgrade to Pro version by entering Key code in Register screen

New in version 2.3:

- May now have up to 10 multiple choice answers
- Cosmetic changes in menus, etc.

New in version 2.2:

Long questions/answers scroll  
LargeBoldFont used instead of LargeFont  
Fixed crashing bug if you tried to run without quizzes installed on some systems

New in version 2.1:

User interface enhancements

New in version 2.0:

New file format with lots of optional quiz features  
Choose display font  
Choose sound to play for correct/incorrect answers  
Import from Doc files (Pro)  
"Auto" question mode  
PalmOS 3.0 required  
"Previous" button added

New in version 1.2:

Added "categories" popup in Import  
Fixed bug where private & recently deleted records don't show up in Import  
Fixed misc bugs during Import  
Put max questions limit back to 500  
Longer answers possible (up to 128 chars)  
Up/down buttons work in quiz list, memo list  
Down button goes to "next question"  
Percentage next to last score  
Added "replace" option when importing quiz with same name

New in version 1.1:

You may append memos to the end of existing quizzes to surpass 4000 char limit.  
More feedback after right and wrong answers in multiple choice format.  
Fixed bug where some memos not listed during Import.  
Memos don't need to have a comment line to be imported.  
Give warning if quiz only supports flash card and multiple choice is selected.  
Option to repeat wrong answers

## **Credits and Contact Info**

Quizzler was created and is copyrighted by John Covele, President of Pocket Mobility, Inc. Our web site features the latest version and news about Quizzler, as well as other handheld software products.

Pocket Mobility, Inc.  
2735-B Iris Ave  
Boulder, CO 80304  
(303) 546-6200

<http://www.PocketMobility.com>