

# QuizWiz

User Manual

# Contents

Introduction .....	3
Taking a Quiz .....	3
Creating Your Own Quiz .....	5
Editing Existing Quizzes .....	7
Frequently Asked Questions .....	8
Revision History .....	9
Disclaimer .....	9

# Introduction

Thank you for downloading QuizWiz, the easy-to-use quizzing program that lets you tutor yourself on any topic using flashcards, multiple choice, or true/false questions. With QuizWiz you can import quizzes you've created yourself using the Palm's builtin Memo Pad application or choose from a library of free quizzes available at our website [www.nosleep.net](http://www.nosleep.net).

## Sharing Quizzes

If you have created a quiz that you would like to share with others, or if you have suggestions for new quizzes we should create, please post to a forum to let us know!

If you have any problems using QuizWiz, feel free to post a message at the help forum (the response time varies, but we do respond to every request). To make a suggestion or ask for help, and to find the latest news about current and upcoming apps, be sure to check out [www.nosleep.net](http://www.nosleep.net).

## Taking a Quiz

To take a quiz, launch the QuizWiz application and tap on the name of the quiz you want to select from the list of quizzes that appears. (Note that if there are no quizzes listed, you must install a quiz file using your Palm desktop software, or by creating your own quiz using the Memo Pad and then importing it from within QuizWiz.)

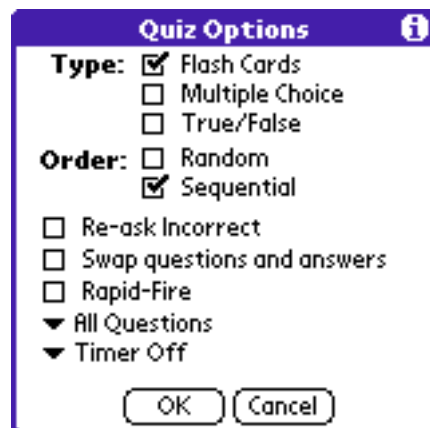
## Preferences

You can access Preferences from the drop-down menu when the list of quizzes is available.

**Font** Choose one of three font sizes to display the quiz.

**Sound** Choose to enable or disable sounds.

After you have selected the name of the quiz you want to take, tap the **Begin** button, which will bring up the Quiz Options screen.



## Quiz Options

Choose the quiz type:

**Flash Cards:** it shows each question and then the answer.

**Multiple Choice:** it shows one question and gives you a choice between 4 possible answers.

**True/False:** it shows a question and an answer and you must decide if it is correct or not.

Choose the quiz order, **Random** or **Sequential**.

If you check the **Swap questions and answers** box, then the questions are displayed as answers, and the answers are displayed as questions.

If you check the **Re-ask Incorrect** box, QuizWiz will re-ask any questions you answered incorrectly.

If you check the **Rapid-Fire** box, then you will not get a confirmation message when you answer a question correctly, only when you answer one incorrectly.

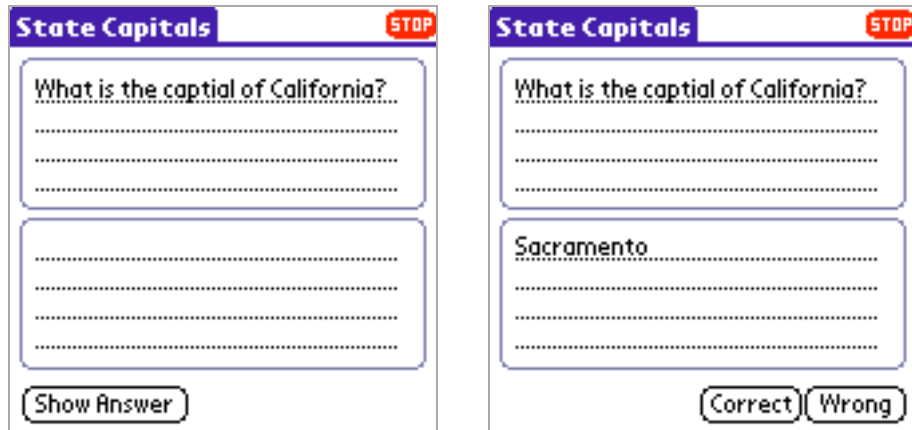
Choose the **Number of Questions** you want to be asked by selecting one of the choices from the drop down list.

Choose the **Question Time Limit** you would like to use by selecting one of the choices from the drop down list.

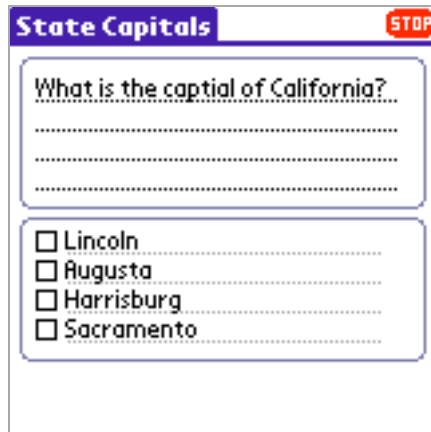
When you are happy with your options, tap **OK** to begin the quiz.

Here's what each type of quiz looks like:

### Flash Cards



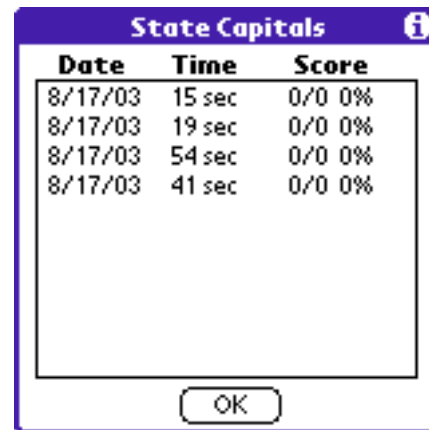
### Multiple Choice True/False



QuizWiz will continue to ask questions until you've reached the number of questions you selected on the Quiz Options screen, and then re-ask any questions you've gotten wrong if you selected the Re-ask Incorrect option. You may also end a quiz at any time by tapping the **Stop** button in the upper right corner of the screen.

### Quiz Results

When the quiz is completed or stopped, you will see a summary of your results, including the date, elapsed time, and the score.



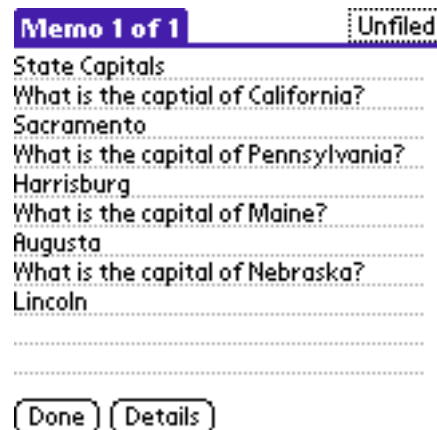
## Creating Your Own Quizzes

First, write quiz questions and answers in the Memo Pad application. Here's the format:

- 1<sup>st</sup> line: the name of the quiz
- odd lines: the questions
- even lines: the answers

For example, you might create a memo like this:

```
State Capitals
What is the capital of California?
Sacramento
What is the capital of Pennsylvania?
Harrisburg
What is the capital of Maine?
Augusta
What is the capital of Nebraska?
Lincoln
```



Augusta  
What is the capital of Nebraska?  
Lincoln

....

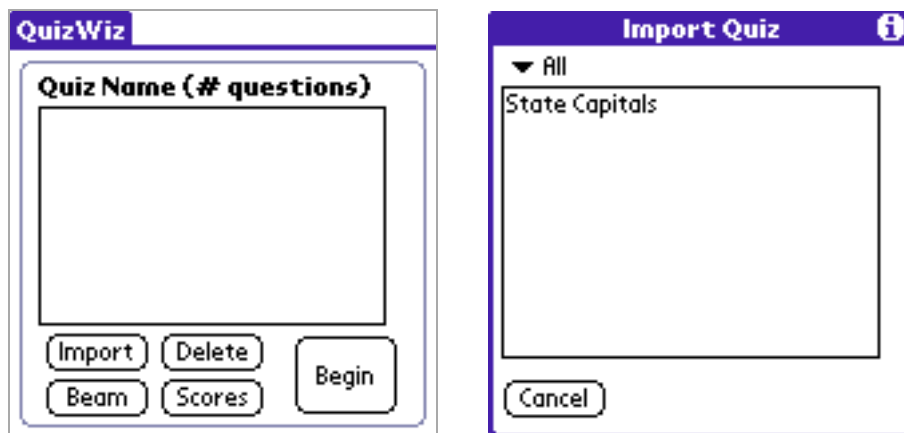
**Note:** To enter questions or answers that are longer than a single line, simply let the text wrap around to the next line without pressing the return key. After it has been entered, then press the return key to designate the end of the question or answer.

To make the data entry easier, create the memo using the Palm desktop software, and then hotsync it. Also, check the memo after hotsyncing to your handheld to make sure it is in the correct format as described above.

**Mac users note:** When creating quizzes with the Palm desktop software, enter the name of the quiz in the Title field. Then enter the first question on the first line, the first answer on the second line, and so on.

## Specifying Wrong Answers

If you'd like to specify both the right answer and wrong answers for a particular multiple choice question, you may enter up to 4 answers for each question, separated by a | character (shift+backslash). Be sure the first answer is the correct answer. For example: right answer|wrong answer|next wrong answer|last wrong answer



## Importing a New Quiz

To add a new quiz, tap on the **Import** button. That will display the Import screen with a list of all your memos. Use the pop-down list to select a category, then select the quiz memo that you created. It will automatically be imported into QuizWiz.



You should now see your new quiz in the list.

**Note:** **Beam** will send a quiz to a friend over infrared,

**Delete** will permanently delete a quiz, and **Scores** will display the 10 most recent scores received for a quiz.

### Quiz Menu Options

**Add To** will add more questions to an existing quiz.

**Edit** allows you to edit the title, questions, and answers of an existing quiz. For more information on editing quizzes, see "Editing Existing Quizzes" on page 8.

## Editing Existing Quizzes

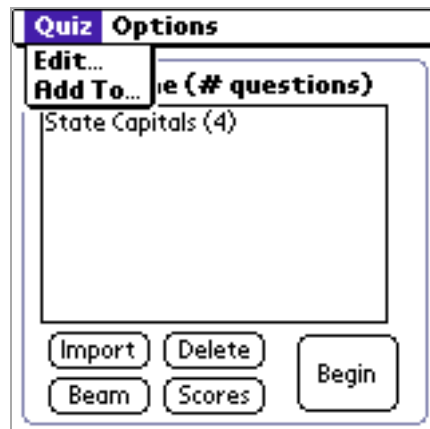
You can easily modify, add, and delete questions in an existing quiz.

From the Quiz List screen, tap the Menu button. Select Edit from the Quiz menu.

The Edit Quiz screen will appear.

- Use the left and right arrows to scroll through quiz items.
- To edit Incorrect answers, tap the **Alt 1**, **Alt 2**, or **Alt 3** buttons.
- To add a Question, tap the **New** button.
- To delete a Question, tap the **Delete** button.

When you are finished editing, tap **Done**.



## Frequently Asked Questions

Q: I keep getting an error when I attempt to import a quiz?

A: Here are some notes about importing:

- Make sure there are no extra linebreaks anywhere in the text. There should only be a linebreak at the end of each answer/question.
- If you have questions or answers that are longer than a single line, just let the line automatically wrap around to the next line. **Do not** put any linebreaks (i.e. pressing the return key on your keyboard) within a question or an answer.
- If you are having any problems importing quizzes from the Memo Pad application, first try to import a very simple quiz, perhaps with only one question and one answer. Then after you have that working, try to import longer quizzes.

# Revision History

## **Version 2.4** (12/10/03)

### Bugs Fixed:

- Fixed problem with scroll bars

### Internal:

- converted project over from CodeWarrior to Prc Tools
- started documenting the code to support doxygen automatic documentation

# Disclaimer

Despite our best efforts, bugs sometimes find their way into our software (and tell us if you find any!) and sometimes you can do things that you don't intend to that can mess things up, so therefore we cannot take any responsibility for any loss of data or the like that may occur. This software is provided "as-is" without any warranties expressed or implied and by downloading the software the user agrees with this and uses the software at their own risk.